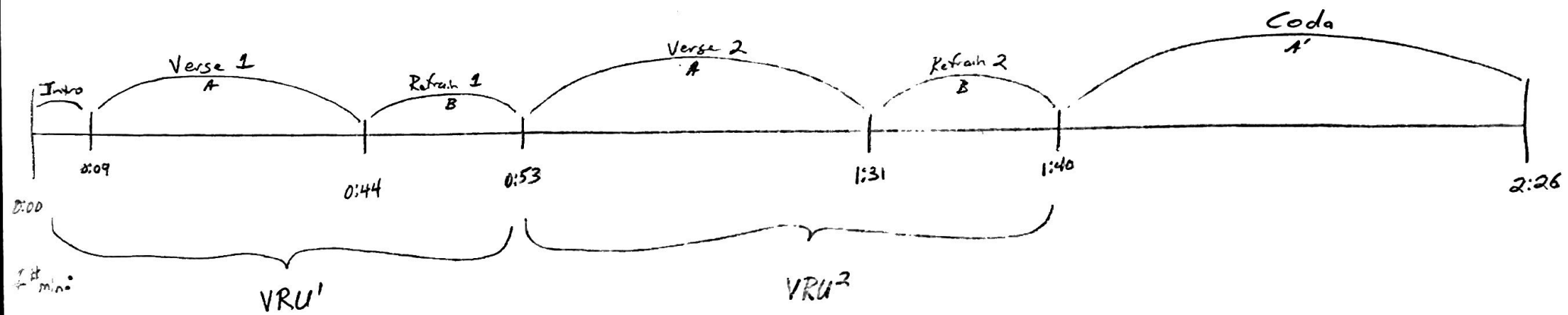


# Led Zeppelin ~ 'Immigrant Song'

7/21



# Led Zeppelin ~ 'Immigrant Song'

7/12

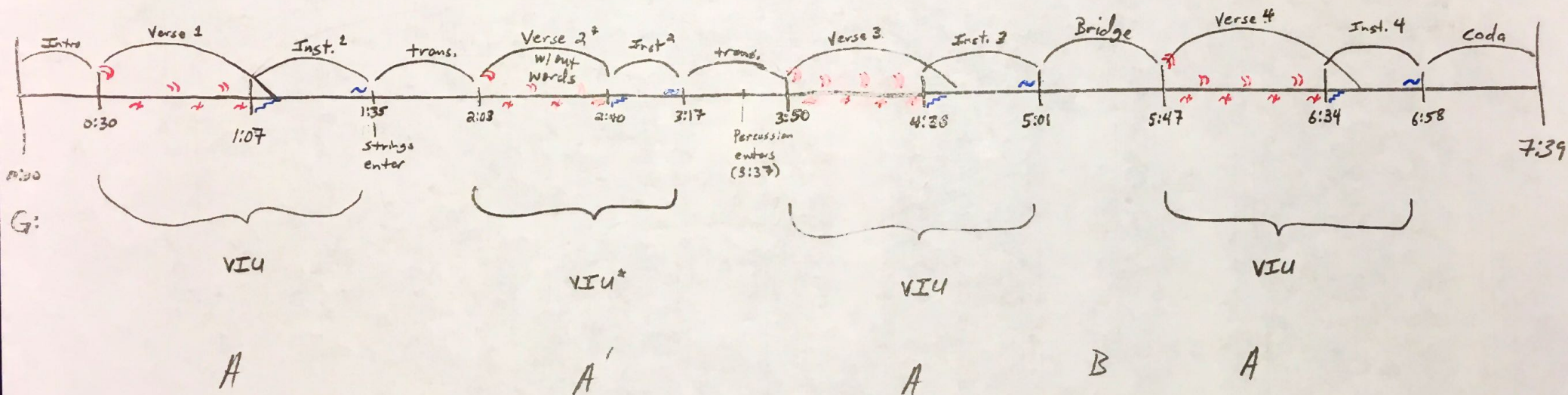
Handwritten musical notation for the first system of 'Immigrant Song'. It includes staves for Vocals, Guitar, and Percussion. The key signature is D major (two sharps) and the time signature is common time (C). The vocal line begins with a 'VH' marking and a 'Vocals' label. The guitar part features a melodic line with a 'VH' marking. The percussion part shows a drum set with a 'Perc' label and a 'f#:' marking. The first measure of the guitar part has a 'i -' marking below it.

Handwritten musical notation for the second system of 'Immigrant Song'. It includes staves for Vocals and Guitar. The key signature is D major (two sharps) and the time signature is common time (C). The vocal line contains the lyrics: "On we sweep with rushing oar - Our only goal will be the Western shore". The guitar part features a melodic line with a 'Guitar' label and a 'dc' marking. The first measure of the guitar part has a 'III b7' marking below it. The second measure has a '(iv b7)' marking below it. The third measure has a '(bII (11))' marking below it.

Handwritten musical notation for the third system of 'Immigrant Song'. It includes a staff for Guitar. The key signature is D major (two sharps) and the time signature is common time (C). The guitar part features a melodic line with a 'Guitar' label and a 'dc' marking.

# Jed Zepelin - 'The Rain Song'

JMN



# Jed Zeppelin - 'The Rain Song'

MN

Handwritten musical notation for the first system. It consists of a single staff with a treble clef, a key signature of one sharp (F#), and a common time signature (C). The notation includes a series of notes and rests, with a "gliss." annotation under a note. Below the staff, there are guitar chord diagrams for G, I<sup>9</sup>, and I<sup>9</sup>.

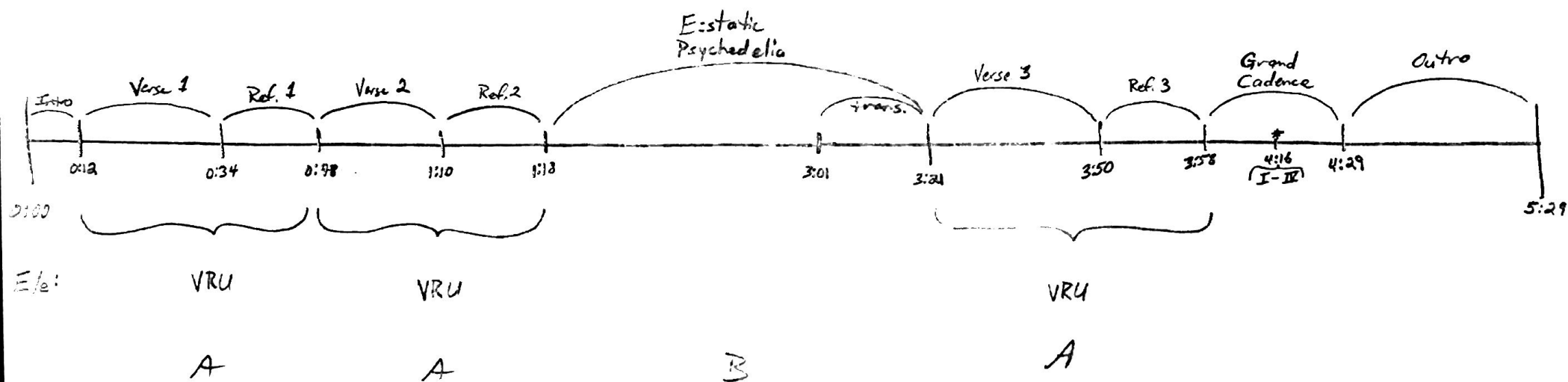
Handwritten musical notation for the second system. It consists of two staves: a treble clef staff and a bass clef staff. The key signature is one sharp (F#) and the time signature is common time (C). The notation includes various notes, rests, and slurs. Annotations include "MI" above the treble staff, "IV" below the bass staff, and "gliss." above the treble staff. Below the bass staff, there are guitar chord diagrams for IV and I<sup>9</sup>.

Handwritten musical notation for the third system. It consists of two staves: a treble clef staff and a bass clef staff. The key signature is one sharp (F#) and the time signature is common time (C). The notation includes various notes, rests, and slurs. Annotations include "MI" above the treble staff, "I" below the bass staff, "II<sup>9</sup>" below the bass staff, "III<sup>9</sup>" below the bass staff, and "IV<sup>7</sup>" below the bass staff. Below the bass staff, there are guitar chord diagrams for I, II<sup>9</sup>, III<sup>9</sup>, and IV<sup>7</sup>.

Handwritten musical notation for the fourth system. It consists of two staves: a treble clef staff and a bass clef staff. The key signature is one sharp (F#) and the time signature is common time (C). The notation includes various notes, rests, and slurs. Annotations include "IV<sup>7</sup>" below the bass staff, "III<sup>7</sup>" below the bass staff, "II<sup>7</sup>" below the bass staff, and "I" below the bass staff. Below the bass staff, there are guitar chord diagrams for IV<sup>7</sup>, III<sup>7</sup>, II<sup>7</sup>, and I.

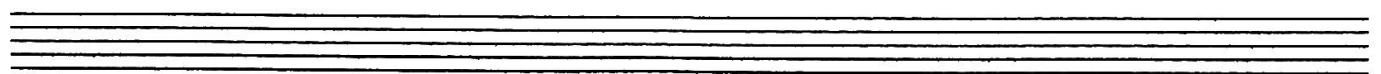
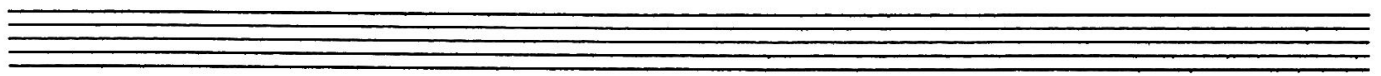
# Led Zepplin - 'Whole Lotta Love'

MRW



# Led Zeppelin ~ 'Whole Lotta Love'

MMN



Lead Guitar

Rhythm Gtr

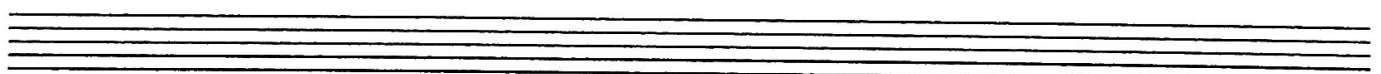
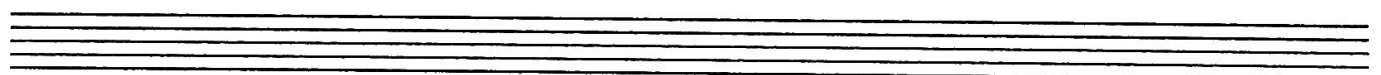
Bass Gtr

Snare

Toms

Hi-hat

Kick



Rhythm Gtr

Basic Motive

Outro Transformation

Bass Gtr

